

# SMALL in size. BIG on colour.

Dazzle with colours without the bulk

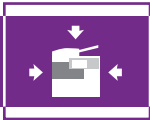


# Unleash Your Creativity in a Compact Space

Toshiba's new all-in-one e-STUDIO2051C/2551C colour Multifunction Printers are now more compact, more light-weight so that it can fit snugly into any office corner. Friendly to the environment, these new printers are easy to use and can add splashes of colour to your office documents.

**e-STUDIO2051c**

**e-STUDIO2551c**

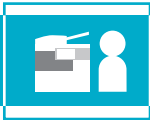


## COMPACT DESIGN

The all-in-one benefits of the e-STUDIO2051C/2551C are yours in a compact body that centralises controls, simplifies management of consumables and services, and eliminates the messy connections that multiple devices require.

- Printing, copying, scanning and faxing\* come together in a stylish, compact body
- Paper sizes up to A3 are handled

\*Fax is offered as an option.



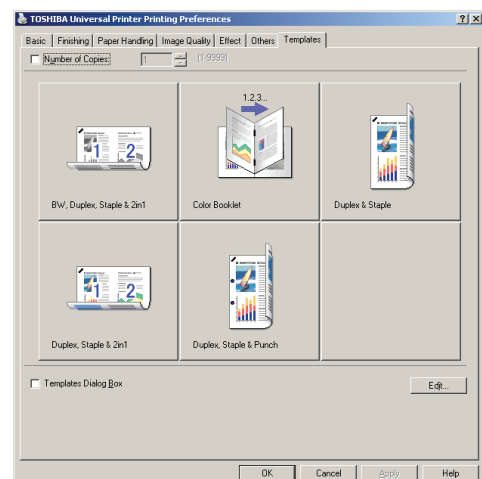
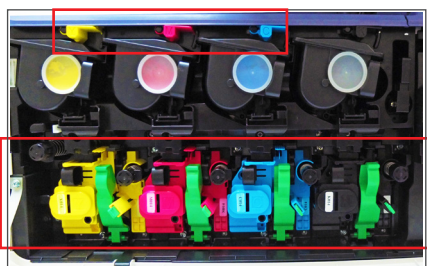
## EASE OF USE

Toshiba takes a comprehensive approach to simplify operation. From large LCD panel to universal design, a host of innovations and refinements creates a stress-free, wholesome experience for you.

- The 7" colour LCD touch screen panel with tilt-adjustable design
- The right paper size is automatically detected when papers are placed in the drawers.
- Both the control panel and printer driver feature an easy-to-use template that instantly recalls various settings to make routine work easier.
- One-touch template can perform printing setting by one-touch. You can easily print the document without the need to set the printer driver.



- Universal design features include paper drawer handles that are easy to open and an optional accessible arm that makes the RADF (Reversing Automatic Document Feeder) easy to use for the physically impaired.
- Colour-challenged individuals will appreciate "Color Universal Design" features like easy-to-recognise panel screens, LED lamps and operation levers.





## VIVID COLOUR

Documents containing colour information look great on PC monitors but lose their luster and important details when printed in black and white. The high-quality colour performance of the e-STUDIO2051C/2551C can make your documents more appealing.

- The new image processing engine and LED print head deliver an accurate reproduction of text, graphics, fine lines, tiny dots etc. in both full colour and Black-and-White.
- Toshiba's new toner improves glossiness, thus boasting vivid colour reproduction of even the most colourful photos.
- Full-colour paper documents can be scanned and saved in full colour without losing the smallest details.



Laser Print Head



LED Print Head

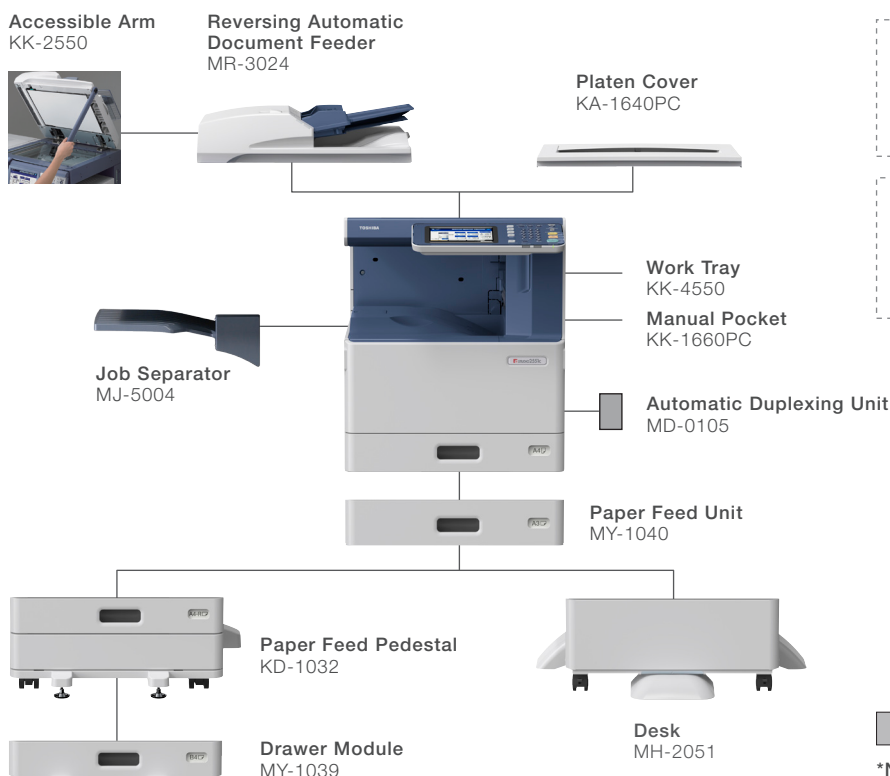


## ECO-FRIENDLY

Toshiba's multifaceted commitment to the environment continues in the e-STUDIO2051C/2551C. Eco-friendly features range from innovation-driven reductions in power consumption to the reduced use of materials that can harm the environment.

- Designed to be of low power consumption
  - ~ Low Temperature Fusing Toner and Fusing Unit reduce power consumption and the warm-up time becomes 35 seconds
  - ~ Super Sleep Mode reduces power consumption to 1W\*
  - ~ LED print head reduces power consumption
  - ~ LED light is used for the light source of scanner
- Logistic and transportation burden is reduced due to the compact size and light weight
- Toshiba minimized the use of harmful materials and maximised the use of recycled plastics. Even the emblem is made of biomass plastic.
- These models comply with worldwide environmental standards such as Energy Star Program version 1.1.

## SYSTEM CONFIGURATIONS



### FAX Option

GD-1320	<b>FAX Unit</b>
GD-1260	<b>2nd Line for FAX Unit</b>

### Other Option

KP-2004, KP-2005	<b>e-BRIDGE ID Gate</b>
GQ-1260	<b>Harness kit for Coin Controller</b>

**Paper Feed Controller**  
GH-1080

\*Necessary for connecting PFU, PFP

# SPECIFICATION

General	
<b>Type</b>	Desktop
<b>Maximum original paper size</b>	A3
<b>Print/copy speed (A4)</b>	Colour: 20/25 ppm, B&W: 20/25 ppm
<b>Paper input capacity (80g/m<sup>2</sup>, A4)</b>	Standard: 250 sheets (Drawer), 100 sheets (Stack Feed Bypass)
<b>Note:</b> Paper input capacity depends on system configuration.	Optional: 550 sheets (PFU) or 550 sheets (Paper Feed Pedestal), 550 sheets (Drawer for PFP)
<b>Paper size &amp; weight</b>	Drawers: A5-R — A3, 60 — 163g/m <sup>2</sup> Stack Feed Bypass: 100 x 148mm — A3, 60 — 209g/m <sup>2</sup>
<b>Memory</b>	2GB + 8GB (SSD)
<b>Warm-up time</b>	Approx. 35 sec.
<b>Power consumption</b>	Max. 2.0kW (220-240V)
<b>Dimensions (W x D x H)</b>	575 x 590 x 662mm
<b>Weight</b>	*Height at original glass Approx. 56kg

Printing Functions	
<b>Print engine resolution</b>	Max. 600 x 600 dpi
<b>Supported OS</b>	Windows XP SP3 (32bit) Windows XP X64 (64bit) Windows Server 2003 (32bit) (SP1 Recommended) Windows Server 2003 X64 (64 bit) Windows Vista SP2 (32 bit) Windows Vista SP2 (64 bit) Windows Server 2008 (32 bit) Windows Server 2008 (64 bit) Windows Server 2008 R2 (64 bit) (SP1 Recommended) Windows 7 (32 bit) (SP1 Recommended) Windows 7 (64 bit) (SP1 Recommended)
<b>Interface</b>	Standard: 10/100/1000baseT
<b>Network protocols</b>	TCP/IP (IP v4/v6), IPX/SPX, NetBIOS over TCP/IP
<b>Printing protocols</b>	Windows Printing, LPR/LPD, IPP, NetWare P-SERVER, Port 9100, WS Print, FTP
<b>PDL</b>	PCL6 Emulation
<b>Major features</b>	•Watermark Printing •Image Overlay •Tab Paper Printing •Poster Print

Copying Functions	
<b>Original size</b>	A5-R — A3
<b>Copy size</b>	Drawers: A5-R — A3, SFB: 100 x 148mm — A3
<b>Resolution</b>	Scanning: 600 x 600 dpi Copying: 600 x 600 dpi
<b>Original scanning speed</b>	25 spm (A4)
<b>First copy time</b>	8.2 sec. (B&W), 10.3 sec. (Full colour)
<b>Multiple copies</b>	1 to 999 sheets
<b>Colour mode</b>	Auto Colour, Colour, Twin Colour, Mono Colour, B&W
<b>Original mode</b>	Text, Text/Photo, Photo, Printed Image, Map, Image Smoothing
<b>Reproduction Ratio</b>	Note: The original mode may not be available in selected colour modes. 25% to 400% (1% Increment) (Glass)
<b>Exposure control</b>	25% to 200% (1% Increment) (Original on RADF) Automatic/Manual (11 steps)
<b>Major features</b>	•2 in 1/4 in 1*, 4 in 1/8 in 1(Duplex)*2 •Rotation Copy •Alternation*1 •Annotation •X-Y Zoom*1 •Trimming/Masking •Magazine Sort*2 •Job Reservation •Job Build •Center Erase •Image Shift •RGB Adjustment •Background Adjustment •Sharpness Adjustment •Twin Colour Copying •Colour Balance Adjustment

Scanning Functions	
<b>Scanning speed (A4)</b>	Colour/B&W: Up to 50 spm (300 dpi)
<b>Scanning mode</b>	Auto Colour, Colour, Grayscale, B&W
<b>Scan format (Colour)</b>	B&W: TIFF, PDF Grayscale/Colour: JPEG, TIFF, PDF, Slim PDF Auto Colour: TIFF, PDF
<b>Scanning resolution</b>	600/400/300/200/150/100 dpi
<b>Major features</b>	•2-sided Scan •Image Rotation •Mixed Size Paper Scanning •Scan to Email •Scan to file (SMB, FTP, FTPS, IPX/SPX, NetWare over TCP/IP) •WS Scan •Omit Blank Page •Original Outside Erase

Fax Functions	
<b>Compatibility</b>	Super G3, G3
<b>Modem Speed</b>	Max. 33.6kbps
<b>Data Compression Method</b>	JBIG, MMR, MR, MH
<b>Transmission Speed</b>	Approx. 3 seconds
<b>Memory Transmission</b>	Max. 50 Jobs 2000 destination, 400 destinations/job, Max. 1000 pages/file
<b>Scan Speed</b>	0.7 seconds per page (A4)

\*1: Optional RADF is required.  
\*2: Optional RADF and ADU are required.  
\*3: Network scanning only.

Distributed by

Options	
<b>ADU (Automatic Duplexing Unit) MD-0105</b>	
<b>Paper size</b>	A5-R — A3
<b>Stack capacity</b>	Stackless
<b>Paper weight</b>	60 — 163g/m <sup>2</sup>
<b>RADF (Reversing Automatic Document Feeder) MR-3024</b>	
<b>Original capacity (80g/m<sup>2</sup>)</b>	100 sheets (A3, A4)
<b>Original setting</b>	Face-up
<b>Available original size &amp; weight</b>	A5-R — A3, 35-157g/m <sup>2</sup> (single sided), 50-157g/m <sup>2</sup> (double sided)
<b>Dimensions (W x D x H) &amp; Weight</b>	575 x 531 x 135mm, Approx. 11.0kg
<b>Paper Feed Pedestal KD-1032</b>	
<b>Paper supply (80g/m<sup>2</sup>)</b>	Approx. 550 sheets
<b>Paper size &amp; weight</b>	A5-R — A3 (60 — 163 g/m <sup>2</sup> )
<b>Dimensions (W x D x H) &amp; Weight</b>	575 x 583 x 292mm, Approx. 16.3kg
<b>Drawer Module MY-1039</b>	
<b>Paper supply (80g/m<sup>2</sup>)</b>	Approx. 550 sheets
<b>Paper size &amp; weight</b>	A5-R — A3 (60 — 163 g/m <sup>2</sup> )
<b>Dimensions (W x D x H) &amp; Weight</b>	532 x 575 x 89mm, Approx. 3.1kg
<b>Paper Feed Unit MY-1040</b>	
<b>Paper supply (80g/m<sup>2</sup>)</b>	Approx. 550 sheets
<b>Paper size &amp; weight</b>	A5-R — A3 (60 — 163 g/m <sup>2</sup> )
<b>Dimensions (W x D x H) &amp; Weight</b>	575 x 583 x 163mm, Approx. 9.5kg
<b>Job Separator MJ-5004</b>	
<b>Capacity (80g/m<sup>2</sup>)</b>	Upper Tray: Approx. 150 sheets Lower Tray: Approx. 250 sheets
<b>Dimensions (W x D x H) &amp; Weight</b>	498 x 415 x 153mm, Approx. 3.3kg
<b>FAX Unit GD-1320</b>	
<b>Compatibility</b>	Super G3, G3
<b>Number of lines</b>	1 line (2nd line is optional)
<b>Modem speed</b>	Max. 33.6kbps
<b>Data compression method</b>	JBIG, MMR, MR, MH
<b>Communication protocols</b>	ITU-T T.30
<b>Transmission speed</b>	Approx. 3 sec. per page
<b>Scanning mode</b>	Text, Text/Photo, Photo, B&W only
<b>Gray scale</b>	256 steps
<b>2nd Line for FAX Unit GD-1260</b>	
<b>Harness Kit For Coin Controller GQ-1260</b>	
<b>e-BRIDGE ID Gate KP-2004 for HID/KP-2005 for MIFARE</b>	
<b>Accessible Arm KK-2550</b>	
<b>Work Tray KK-4550</b>	
<b>Paper Feed Controller GH-1080</b>	

ISO 9001 and ISO 14001 Certifications	
These highly acclaimed certifications are recognised worldwide as measures of top quality and environmental management excellence. They are awarded to manufacturers for facilities and practices that meet the strict standards set by the Geneva based International Standardization Organization. To date, four copier sales affiliates and all Toshiba TEC manufacturing facilities where copiers, accessories, supplies and parts are produced have received ISO 9001 certification, while four copier sales affiliate and all Toshiba TEC manufacturing facilities have received ISO 14001 certification — even more reasons to count on Toshiba.	

Microsoft and Windows® are registered trademarks of Microsoft Corporation in the United States and/or other countries.  
All other brand and/or product names are trademarks of their respective owners.

This brochure was compiled based on information that was accurate prior to product launch. Product design and specifications are subject to change without notice. The colour(s) of the actual product may vary from the colour(s) shown in this brochure. No part of this material may be used or reproduced in any manner whatsoever without permission. 1GB is equivalent to 1 billion bytes. Warm-up time and print speed may vary depending on the operating environment. ©2012 TOSHIBA TEC CORPORATION All rights reserved.

As an ENERGY STAR Partner TOSHIBA TEC CORPORATION has determined that this multifunctional device model meets the ENERGY STAR guidelines for energy efficiency.

Driven by



Made from 100% Elemental Chlorine Free (ECF) wood pulp, sourced from carefully managed and renewed forests.  
**This paper is 100% recyclable.**

# TOSHIBA

TOSHIBA SINGAPORE Pte., Ltd.

www.estudio.com.sg